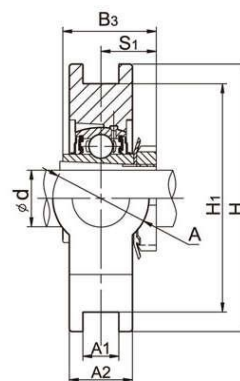
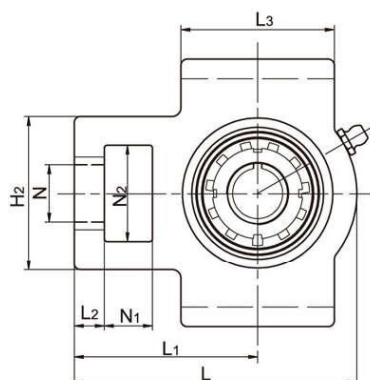


LDK[®] Take Up Units

UKT+H Standard duty, Tapered bore, Adapter sleeve locking



Unit No.	Shaft Dia		Dimensions (mm)															Weight (kg)
	d		N1	L2	H2	N2	N	L3	A1	H1	H	L	A	A2	L1	B3	S1	
	(in)	(mm)																
UKT205+H2305 205+HE2305	3/4	20	16	10	51	32	19	51	12	76	89	97	32	24	62	35	18.5	0.8
UKT206+H2306 206+HS2306 206+HE2306	7/8 1	25	16	10	56	37	22	57	12	89	102	113	37	28	70	38	20.5	1.26
UKT207+H2307 207+HS2307	1-1/8	30	16	13	64	37	22	64	12	89	102	129	37	30	78	43	22.5	1.68
UKT208+H2308 208+HE2308 208+HS2308	1-1/4 1-3/8	35	19	16	83	49	29	83	16	102	114	144	49	33	88	46	24.5	2.28
UKT209+H2309 209+HA2309 209+HE2309 209+HS2309	1-7/16 1-1/2 1-5/8	40	19	16	83	49	29	83	16	102	117	144	49	35	87	50	26	2.52
UKT210+H2310 210+HS2310 210+HA2310 210+HE2310	1-5/8 1-11/16 1-3/4	45	19	16	83	49	29	86	16	102	117	149	49	37	90	55	27.5	2.75
UKT211+H2311 211+HS2311 211+HA2311 211+HE2311	1-7/8 1-15/16 2	50	25	19	102	64	35	95	22	130	146	171	64	38	106	59	28.5	4.1
UKT212+H2312 212+HS2312	2-1/8	55	32	19	102	64	35	102	22	130	146	194	64	42	119	62	31	4.9
UKT213+H2313 213+HA2313 213+HE2313 213+HS2313	2-3/16 2-1/4 2-3/8	60	32	21	111	70	41	121	26	151	167	224	70	44	137	65	32	6.7
UKT215+H2315 215+HA2315 215+HE2315	2-7/16 2-1/2	65	32	21	111	70	41	121	26	151	167	232	70	48	140	73	35.5	7.4
UKT216+H2316 216+HA2316 216+HE2316	2-11/16 2-3/4	70	32	21	111	70	41	121	26	165	184	235	70	51	140	78	39	8.1
UKT217+H2317 217+HA2317 217+HE2317	2-15/16 3	75	38	29	124	73	48	157	30	173	198	260	73	54	162	82	40	11