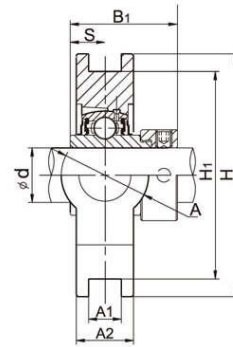
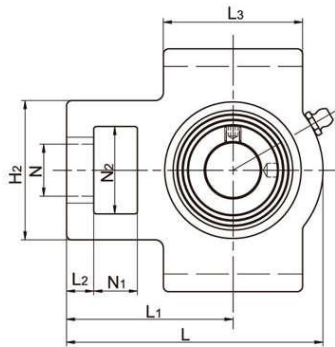


LDK® Take Up Units

NAT Standard duty, Wider inner ring bearing, Eccentric locking



Unit No.	Shaft Dia		Dimensions (mm)													Weight (kg)		
	d		N1	L2	H2	N2	N	L3	A1	H1	H	L	A	A2	L1		B1	S
	(in)	(mm)																
NAT201S 201-8S 202S 202-10S 203S 203-11S	1/2 5/8 11/16	12 15 17		9	46	31	18	46	12	70	82	88	30	21	58	37.3	13.9	0.78
NAT201 201-8 202 202-10 203 203-11 204 204-12	1/2 5/8 11/16 3/4	12 15 17 20		10	51	32	19	51	12	76	89	94	32	21	61	43.5	17	0.87
NAT205 205-14 205-15 205-16	7/8 15/16 1	25	16	10	51	32	19	51	12	76	89	97	32	24	62	44.3	17.4	0.92
NAT206 206-18 206-19 206-20	1-1/8 1-3/16 1-1/4	30	16	10	56	37	22	57	12	89	102	113	37	28	70	48.3	18.2	1.39
NAT207 207-20 207-21 207-22 207-23	1-1/4 1-5/16 1-3/8 1-7/16	35	16	13	64	37	22	64	12	89	102	129	37	30	78	51.1	18.8	1.83
NAT208 208-24 208-25	1-1/2 1-9/16	40	19	16	83	49	29	83	16	102	114	144	49	33	88	56.3	21.4	2.64
NAT209 209-26 209-27 209-28	1-5/8 1-1/16 1-3/4	45	19	16	83	49	29	83	16	102	117	144	49	35	87	56.3	21.4	2.67
NAT210 210-30 210-31	1-7/8 1-15/16	50	19	16	83	49	29	86	16	102	117	149	49	37	90	62.7	24.6	2.81
NAT211 211-32 211-34 211-35	2 2-1/8 2-3/16	55	25	19	102	64	35	95	22	130	146	171	64	38	106	71.3	27.7	4.27
NAT212 212-36 212-38 212-39	2-1/4 2-3/8 2-7/16	60	32	19	102	64	35	102	22	130	146	194	64	42	119	77.7	30.9	5.26
NAT213 213-40	2-1/2	65	32	21	111	70	41	121	26	151	167	224	70	44	137	85.7	34.1	7.55
NAT214 214-44	2-3/4	70	32	21	111	70	41	121	26	151	167	224	70	46	137	85.7	34.1	7.62
NAT215 215-47 215-48	2-15/16 3	75	32	21	111	70	41	121	26	151	167	232	70	48	140	92.1	37.3	8.13
NAT216		80	32	21	111	70	41	121	26	165	184	235	70	51	140	95.2	37.3	8.53
NAT217 217-52	3-1/4	85	38	29	124	73	48	157	30	173	198	260	73	54	162	73.2	23.4	12.03