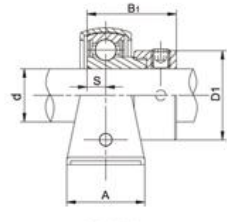
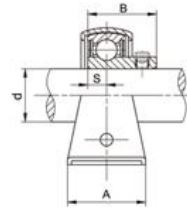
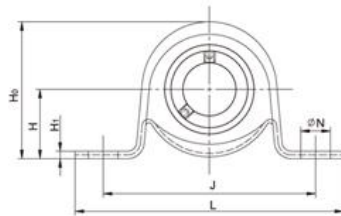


# LDK<sup>®</sup> Stamped Steel Housed Units

## SBPP200/SAPP200 Light duty, Setscrew/Eccentric locking



•SBPP200

•SAPP200

### SBPP200 Series

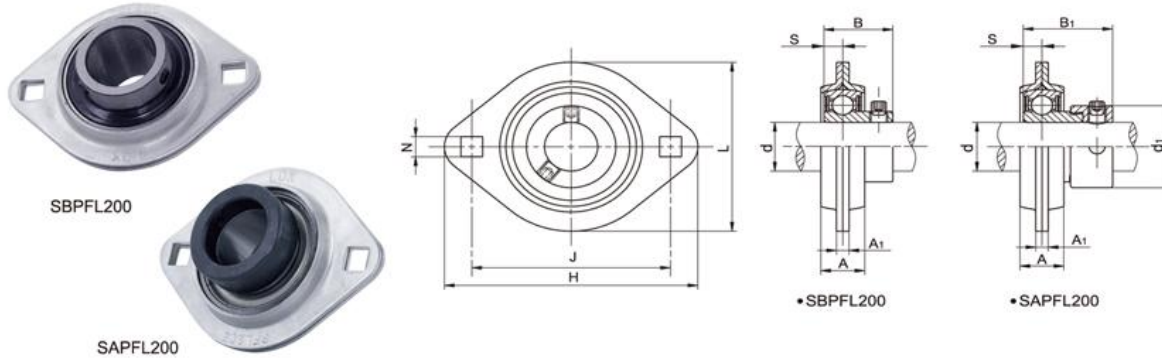
Unit No.	Shaft Dia d		Dimensions(mm)									Bolt Size (mm)	Weight (kg)	
	(in)	(mm)	L	J	H	H <sub>1</sub>	H <sub>0</sub>	N	A	B	S			
SBPP 201	1/2	12	86	68	22.2	2.4	43.4	9.5	25	22	6	M8	0.15	
201-8		15												
202		17												
202-10		17												
203	5/8	17	86	68	22.2	2.4	43.4	9.5	25	22	6	M8	0.15	
203-11														17
SBPP 204	3/4	20	98	76	25.4	3	50.4	9.5	30	25	7	M8	0.22	
204-12		20												
SBPP 205	7/8	25	108	86	28.6	4	56.5	11.5	32	27	7.5	M10	0.31	
205-14														15/16
205-15														1
205-16														1
SBPP 206	1-1/8	30	117	95	33.3	4	66.3	11.5	38	30	8	M10	0.43	
206-18														1-3/16
206-19														11/4
SBPP 207	1-1/4	35	130	106	39.7	5	78.2	11.5	43	32	8.5	M10	0.63	
207-20														1-5/16
207-21														1-3/8
207-22														1-7/16
SBPP 208	1-1/2	40	148	120	43.7	5	85.8	12	43.5	34	9	M10	0.9	
208-24														1-9/16
208-25														1-9/16
SBPP 209	1-5/8	45	156	128	46.8	6	92.3	13	45.7	36	9.5	M10	1.20	
209-26														1-11/16
209-27														1-11/16
209-28														1-3/4

### SAPP200 Series

Unit No.	Shaft Dia d		Dimensions(mm)									Bolt Size		Weight (kg)		
	(in)	(mm)	L	J	H	H <sub>1</sub>	H <sub>0</sub>	N	A	d <sub>1</sub>	B <sub>1</sub>	S	(mm)		(in)	
SAPP 201	1/2	12	86	68	22.2	2.4	43.4	9.5	25	28.6	28.6	6	M8	1/4	0.26	
201-8		15														
202		17														
202-10		17														
203	5/8	17	86	68	22.2	2.4	43.4	9.5	25	28.6	28.6	6	M8	1/4	0.26	
203-11																17
SAPP 204	3/4	20	98	76	25.4	3	50.4	9.5	30	33.3	31	7	M8	5/16	0.31	
204-12		20														
SAPP 205	7/8	25	108	86	28.6	4	56.5	11.5	32	38.1	31.5	7.5	M10	5/16	0.38	
205-14																15/16
205-15																1
205-16																1
SAPP 206	1-1/8	30	117	95	33.3	4	66.3	11.5	38	44.5	35.7	8	M10	3/8	0.56	
206-18																1-3/16
206-19																11/4
SAPP 207	1-1/4	35	130	106	39.7	5	78.2	11.5	43	55.6	38.9	8.5	M10	3/8	0.8	
207-20																1-5/16
207-21																1-3/8
207-22																1-7/16
SAPP 208	1-1/2	40	148	120	43.7	5	85.8	12	43.5	60.3	43.7	9	M10	1/2	1.07	
208-24																1-9/16
208-25																1-9/16
SAPP 209	1-5/8	45	156	128	46.8	6	92.3	13	45.7	63.5	43.7	9.5	M10	1/2	1.24	
209-26																1-11/16
209-27																1-11/16
209-28																1-3/4

# Stamped Steel Housed Units **LDK**<sup>®</sup>

**SBPFL200/SAPFL200** Light duty, Setscrew/Eccentric locking, 2-Bolt flange housing



## SBPFL200 Series

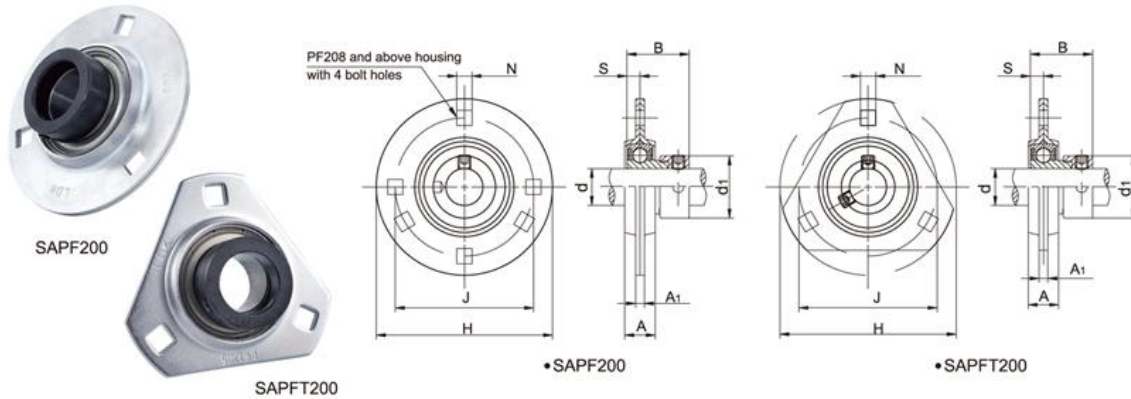
Unit No.	Shaft Dia d		Dimensions(mm)									Bolt Size		Weight (kg)
	(in)	(mm)	H	J	L	A	A <sub>1</sub>	N	B	S	(mm)	(in)		
SBPFL 201	1/2	12	81	63.5	59	14	4	7	22	6	M6	1/4	0.23	
201-8		15												
202	5/8	17	90	71.5	67	16	4	9	25	7	M8	5/16	0.26	
202-10		20												
203	11/16	25	95	76	71	18	4	9	27	7.5	M8	5/16	0.35	
203-11		30												
SBPFL 204	3/4	20	113	90.5	84	18	5	11	30	8	M10	3/8	0.46	
204-12		35												
SBPFL 205	7/8	25	122	100	94	20	5	11	32	8.5	M10	3/8	0.73	
205-14		30												
205-15	1	40	147	119	106	23	7	13.5	34	9	M12	1/2	0.94	
205-16		40												
SBPFL 206	1-1/8	30	113	90.5	84	18	5	11	30	8	M10	3/8	0.46	
206-18		35												
206-19	1-3/16	35	122	100	94	20	5	11	32	8.5	M10	3/8	0.73	
206-20		40												
SBPFL 207	1-1/4	35	147	119	106	23	7	13.5	34	9	M12	1/2	0.94	
207-20		40												
207-21	1-5/16	40	147	119	106	23	7	13.5	34	9	M12	1/2	0.94	
207-22		40												
207-23	1-7/16	40	147	119	106	23	7	13.5	34	9	M12	1/2	0.94	
207-23		40												
SBPFL 208	1-1/2	40	147	119	106	23	7	13.5	34	9	M12	1/2	0.94	
208-24		40												
208-25	40	40	147	119	106	23	7	13.5	34	9	M12	1/2	0.94	

## SAPFL200 Series

Unit No.	Shaft Dia d		Dimensions(mm)									Bolt Size		Weight (kg)
	(in)	(mm)	H	J	L	A	A <sub>1</sub>	d <sub>1</sub>	N	B <sub>1</sub>	S	(mm)	(in)	
SAPFL 201	1/2	12	81	63.5	59	14	4	28.6	7	28.6	6	M6	1/4	0.34
201-8		15												
202	5/8	17	90	71.5	67	16	4	33.3	9	31	7	M8	5/16	0.35
202-10		20												
203	11/16	25	95	76	71	18	4	38.1	9	31.5	7.5	M8	5/16	0.42
203-11		30												
SAPFL 204	3/4	20	113	90.5	84	18	5	44.5	11	35.7	8	M10	3/8	0.59
204-12		35												
SAPFL 205	7/8	25	122	100	94	20	5	55.6	11	38.9	8.5	M10	3/8	0.9
205-14		30												
205-15	1	40	147	119	106	23	7	60.3	13.5	43.7	9	M12	1/2	1.11
205-16		40												
SAPFL 206	1-1/8	30	113	90.5	84	18	5	44.5	11	35.7	8	M10	3/8	0.59
206-18		35												
206-19	1-3/16	35	122	100	94	20	5	55.6	11	38.9	8.5	M10	3/8	0.9
206-20		40												
SAPFL 207	1-1/4	35	147	119	106	23	7	60.3	13.5	43.7	9	M12	1/2	1.11
207-20		40												
207-21	1-5/16	40	147	119	106	23	7	60.3	13.5	43.7	9	M12	1/2	1.11
207-22		40												
207-23	1-7/16	40	147	119	106	23	7	60.3	13.5	43.7	9	M12	1/2	1.11
207-23		40												
SAPFL 208	1-1/2	40	147	119	106	23	7	60.3	13.5	43.7	9	M12	1/2	1.11
208-24		40												
208-25	40	40	147	119	106	23	7	60.3	13.5	43.7	9	M12	1/2	1.11

# LDK<sup>®</sup> Stamped Steel Housed Units

## SAPF200/SAPFT200 Light duty, Eccentric locking, 3-Bolt flange housing

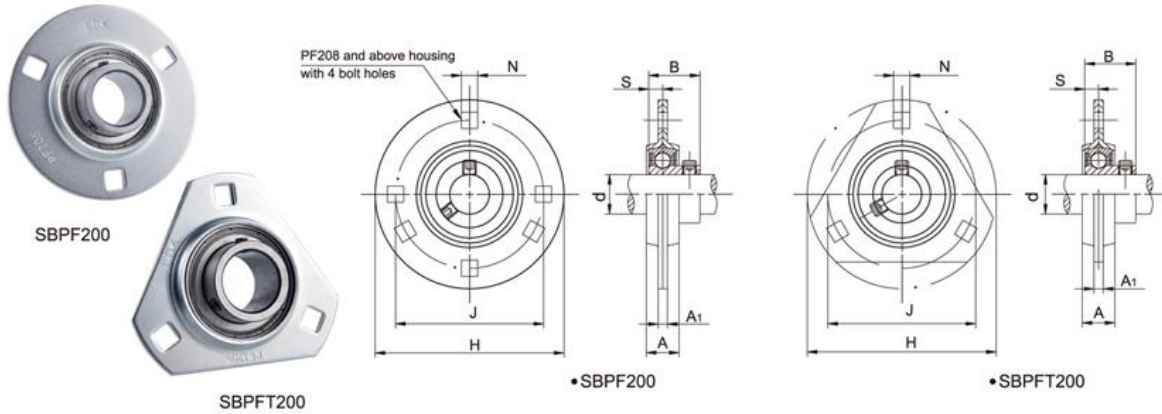


Unit No.	Shaft Dia d		Dimensions(mm)									Bolt Size		Weight (kg)
	(in)	(mm)	H	J	A	A <sub>1</sub>	d <sub>1</sub>	N	B <sub>1</sub>	S	(mm)	(in)		
201		12												
201-8	1/2	12												
202		15	81	63.5	14	4	28.6	7	28.6	6	M6	1/4	0.24	
202-10	5/8	15												
203		17												
203-11	11/16	17												
204		20	90	71	16	4	33.3	9	31	7	M8	5/16	0.35	
204-12	3/4	20												
205		25	95	76	18	4	38.1	9	31.5	7.5	M8	5/16	0.42	
205-14	7/8	25												
205-15	15/16	25												
205-16	1	25												
206		30	113	90	18	5	44.5	11	35.7	8	M10	3/8	0.59	
206-18	1-1/8	30												
206-19	1-3/16	30												
206-20	1-1/4	30												
SAPF SAPFT 207		35	122	100	20	5	55.6	11	38.9	8.5	M10	3/8	0.9	
207-20	1-1/4	35												
207-21	1-5/16	35												
207-22	1-3/8	35												
207-23	1-7/16	35												
208		40	148	119	23	7	60.3	13.5	43.7	9	M12	1/2	1.11	
208-24	1-1/2	40												
208-25	1-9/16	40												
209		45	150	120.5	23	7	63.5	13.5	43.7	9.5	M12	1/2	1.48	
209-26	1-5/8	45												
209-27	1-11/16	45												
209-28	1-3/4	45												
210		50	157	127	25	8	63.5	13.5	43.7	10	M12	1/2	1.66	
210-30	1-7/8	50												
210-31	1-15/16	50												
211		55	168	138	26	8	63.5	13.5	48.4	10.5	M12	1/2	2.0	
211-32	2	55												
211-34	2-1/8	55												
211-35	2-3/16	55												
212		60	177	148	28	8	63.5	13.5	53.1	11	M12	1/2	2.1	
212-36	2-1/4	60												
212-38	2-3/8	60												
212-39	2-7/16	60												

PF208~212 with 4 bolt holes.

# Stamped Steel Housed Units **LDK**<sup>®</sup>

## SBPF200/SBPFT200 Light duty, Setscrew locking, 3-Bolt flange housing



Unit No.	Shaft Dia d		Dimensions(mm)								Bolt Size		Weight (kg)
	(in)	(mm)	H	J	A	A <sub>1</sub>	N	B	S	(mm)	(in)		
201		12											
201-8	1/2	15											
202		15	81	63.5	14	4	7	22	6	M6	1/4	0.23	
202-10	5/8	17											
203		17											
203-11	11/16	20											
204		20	90	71	16	4	9	25	7	M8	5/16	0.26	
204-12	3/4	25											
205		25											
205-14	7/8	95	76	18	4	9	27	7.5	M8	5/16	0.35		
205-15	15/16												
205-16	1												
206		30											
206-18	1-1/8	113	90	18	5	11	30	8	M10	3/8	0.46		
206-19	1-3/16												
206-20	1-1/4												
207		35											
207-20	1-1/4	122	100	20	5	11	32	8.5	M10	3/8	0.73		
207-21	1-5/16												
207-22	1-3/8												
207-23	1-7/16												
208		40											
208-24	1-1/2	148	119	23	7	13.5	34	9	M12	1/2	0.94		
208-25	1-9/16												
209		45											
209-26	1-5/8	150	120.5	23	7	13.5	36	9.5	M12	1/2	1.44		
209-27	1-11/16												
209-28	1-3/4												
210		50											
210-30	1-7/8	157	127	25	8	13.5	38	10	M12	1/2	1.63		
210-31	1-15/16												
211		55											
211-32	2	168	138	26	8	13.5	40	10.5	M12	1/2	1.9		
211-34	2-1/8												
211-35	2-3/16												
212		60											
212-36	2-1/4	177	148	28	8	13.5	42	11	M12	1/2	2.1		
212-38	2-3/8												
212-39	2-7/16												

PF208~212 with 4 bolt holes.