

# Stamped Steel Housed Units **LDK**<sup>®</sup>

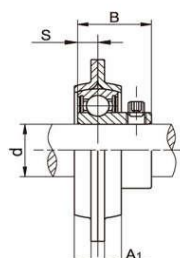
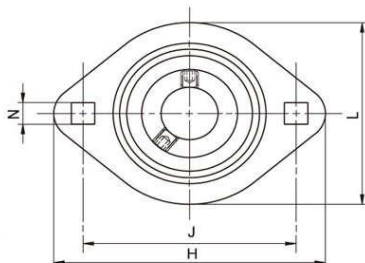
**SBPFL200/SAPFL200** Light duty, Setscrew/Eccentric locking, 2-Bolt flange housing



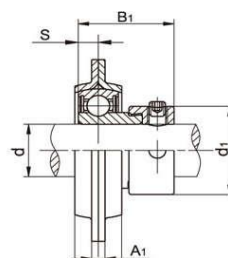
SBPFL200



SAPFL200



•SBPFL200



•SAPFL200

## SBPFL200 Series

Unit No.	Shaft Dia d		Dimensions(mm)								Bolt Size		Weight (kg)	
	(in)	(mm)	H	J	L	A	A <sub>1</sub>	N	B	S	(mm)	(in)		
SBPFL 201		12												
201-8	1/2	15												
202		15	81	63.5	59	14	4	7	22	6	M6	1/4	0.23	
202-10	5/8	17												
203		17												
203-11	11/16													
SBPFL 204		20												
204-12	3/4		90	71.5	67	16	4	9	25	7	M8	5/16	0.26	
SBPFL 205		25												
205-14	7/8													
205-15	15/16		95	76	71	18	4	9	27	7.5	M8	5/16	0.35	
205-16	1													
SBPFL 206		30												
206-18	1-1/8													
206-19	1-3/16		113	90.5	84	18	5	11	30	8	M10	3/8	0.46	
206-20	1-1/4													
SBPFL 207		35												
207-20	1-1/4													
207-21	1-5/16		122	100	94	20	5	11	32	8.5	M10	3/8	0.73	
207-22	1-3/8													
207-23	1-7/16													
SBPFL 208		40												
208-24	1-1/2		147	119	106	23	7	13.5	34	9	M12	1/2	0.94	
208-25	1-9/16													

## SAPFL200 Series

Unit No.	Shaft Dia d		Dimensions(mm)								Bolt Size		Weight (kg)	
	(in)	(mm)	H	J	L	A	A <sub>1</sub>	d <sub>1</sub>	N	B <sub>1</sub>	S	(mm)		(in)
SAPFL 201		12												
201-8	1/2	15												
202		15	81	63.5	59	14	4	28.6	7	28.6	6	M6	1/4	0.34
202-10	5/8	17												
203		17												
203-11	11/16													
SAPFL 204		20												
204-12	3/4		90	71.5	67	16	4	33.3	9	31	7	M8	5/16	0.35
SAPFL 205		25												
205-14	7/8													
205-15	15/16		95	76	71	18	4	38.1	9	31.5	7.5	M8	5/16	0.42
205-16	1													
SAPFL 206		30												
206-18	1-1/8													
206-19	1-3/16		113	90.5	84	18	5	44.5	11	35.7	8	M10	3/8	0.59
206-20	1-1/4													
SAPFL 207		35												
207-20	1-1/4													
207-21	1-5/16		122	100	94	20	5	55.6	11	38.9	8.5	M10	3/8	0.9
207-22	1-3/8													
207-23	1-7/16													
SAPFL 208		40												
208-24	1-1/2		147	119	106	23	7	60.3	13.5	43.7	9	M12	1/2	1.11
208-25	1-9/16													