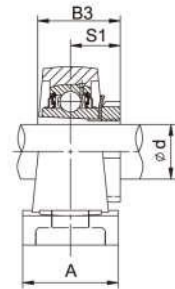
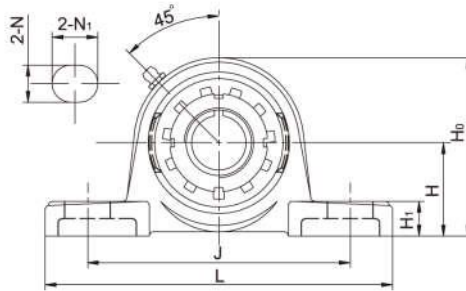


LDK[®] Pillow Blocks

UKP+H Standard duty, Tapered bore, Adapter sleeve locking



| Unit No. | Shaft Dia | | Dimensions (mm) | | | | | | | | | | Bolt Size (mm) | Weight (kg) |
|--|---------------------------|------|-----------------|-----|-----|----|----|----------------|----------------|----------------|----------------|----------------|----------------|-------------|
| | d | | H | L | J | A | N | N ₁ | H ₁ | H ₀ | B ₃ | S ₁ | | |
| | (in) | (mm) | | | | | | | | | | | | |
| UKP205+H2305 205+HE2305 | 3/4 | 20 | 36.5 | 140 | 105 | 38 | 13 | 19 | 15 | 71 | 35 | 18.5 | M10 | 0.83 |
| UKP206+H2306 206+HS2306 206+HA2306 206+HE2306 | 7/8 15/16 1 | 25 | 42.9 | 160 | 121 | 44 | 17 | 21 | 16 | 82 | 38 | 20.5 | M14 | 1.3 |
| UKP207+H2307 207+HE2307 207+HS2307 | 1-1/8 1-3/16 | 30 | 47.6 | 167 | 126 | 48 | 17 | 21 | 17 | 92 | 43 | 22.5 | M14 | 1.5 |
| UKP208+H2308 208+HE2308 208+HS2308 | 1-1/4 1-3/8 | 35 | 49.2 | 180 | 137 | 53 | 17 | 21 | 18 | 99 | 46 | 24.5 | M14 | 2.0 |
| UKP209+H2309 209+HA2309 209+HE2309 | 1-7/16 1-1/2 | 40 | 54 | 190 | 146 | 54 | 17 | 21 | 20 | 106 | 50 | 26 | M14 | 2.3 |
| UKP210+H2310 210+HS2310 210+HA2310 210+HE2310 | 1-5/8 1-11/16 1-3/4 | 45 | 57.2 | 206 | 159 | 60 | 20 | 25 | 21 | 114 | 55 | 27.5 | M16 | 3.0 |
| UKP211+H2311 211+HS2311 211+HA2311 211+HE2311 | 1-7/8 1-15/16 2 | 50 | 63.5 | 217 | 172 | 60 | 20 | 25 | 23 | 125 | 59 | 28.5 | M16 | 3.5 |
| UKP212+H2312 212+HS2312 | 2-1/8 | 55 | 69.9 | 238 | 186 | 70 | 20 | 25 | 25 | 137 | 62 | 31 | M16 | 4.7 |
| UKP213+H2313 213+HA2313 213+HE2313 213+HS2313 | 2-3/16 2-1/4 2-3/8 | 60 | 76.2 | 262 | 203 | 70 | 25 | 30 | 26 | 149 | 65 | 32 | M20 | 5.9 |
| UKP215+H2315 215+HA2315 215+HE2315 | 2-7/16 2-1/2 | 65 | 82.6 | 274 | 217 | 74 | 25 | 30 | 28 | 162 | 73 | 35.5 | M20 | 7.6 |
| UKP216+H2316 216+HA2316 216+HE2316 | 2-11/16 2-3/4 | 70 | 88.9 | 292 | 232 | 78 | 25 | 30 | 30 | 174 | 78 | 39 | M20 | 9.2 |
| UKP217+H2317 | | 75 | 95.2 | 310 | 247 | 83 | 25 | 28 | 32 | 186 | 82 | 40 | M20 | 10.93 |
| UKP218+H2318 | | 80 | 101.6 | 326 | 262 | 88 | 27 | 30 | 33 | 198 | 86 | 42 | M22 | 12.65 |

Notes: 1. Grease fittings available at 90° positions.
2. Bearing housing solid base optional, add suffix SB as designation.