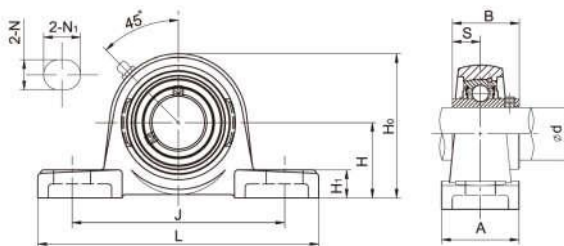


# Pillow Blocks **LDK**<sup>®</sup>

## UCPX Medium duty, Wider inner ring bearing, Setscrew locking



Unit No.	Shaft Dia		Dimensions (mm)										Bolt Size (mm)	Weight (kg)	
	d		H	L	J	A	N	N <sub>1</sub>	H <sub>1</sub>	H <sub>0</sub>	B	S			
	(in)	(mm)													
UCPX05		25													
05-13	13/16														
05-14	7/8		44.4	159	119	51	17	20	18	85	38.1	15.9	M14	1.5	
05-15	15/16														
05-16	1														
UCPX06		30													
06-17	1-1/16														
06-18	1-1/8		47.6	175	127	57	17	20	20	93	42.9	17.5	M14	2.1	
06-19	1-3/16														
06-20	1-1/4														
UCPX07		35													
07-21	1-5/16														
07-22	1-3/8		54.0	203	144	57	17	20	21	105	49.2	19	M14	2.7	
07-23	1-7/16														
UCPX08		40													
08-24	1-1/2														
08-25	1-9/16		58.7	222	156	67	20	23	26	112	49.2	19	M16	3.3	
UCPX09		45													
09-26	1-5/8														
09-27	1-11/16		58.7	222	156	67	20	23	26	116	51.6	19	M16	3.3	
09-28	1-3/4														
09-29	1-13/16														
UCPX10		50													
10-30	1-7/8														
10-31	1-15/16		63.5	240	171	73	20	23	28	126	55.6	22.2	M16	4.3	
10-32	2														
UCPX11		55													
11-33	2-1/16														
11-34	2-1/8														
11-35	2-3/16		69.8	260	184	79	25	28	30	137	65.1	25.4	M20	5.7	
11-36	2-1/4														
11-37	2-5/16														
UCPX12		60													
12-38	2-3/8														
12-39	2-7/16		76.2	286	203	83	25	28	34	151	65.1	25.4	M20	7.3	
UCPX13		65													
13-40	2-1/2														
13-41	2-9/16		76.2	286	203	83	25	28	34	154	74.6	30.2	M20	7.6	
UCPX14		70													
14-42	2-5/8														
14-43	2-11/16		88.9	330	229	89	27	30	34	170	77.8	33.3	M22	9.9	
14-44	2-3/4														
UCPX15		75													
15-45	2-13/16														
15-46	2-7/8		88.9	330	229	89	27	30	35	175	82.6	33.3	M22	11	
15-47	2-15/16														
15-48	3														
UCPX16		80													
16-49	3-1/16														
16-50	3-1/8		101.6	380	283	102	27	30	40	194	85.7	34.1	M22	15	
16-51	3-3/16														
16-52	3-1/4														
UCPX17		85													
17-53	3-5/16		101.6	384	283	102	27	30	40	202	96	39.7	M22	16	
17-55	3-7/16														
UCPX18		90	101.6	384	283	106	27	30	40	206	104	42.9	M22	19	
UCPX20		100	127	432	337	120	33	36	45	244	117.5	49.2	M30	24.9	

Notes:1. Bearing housing solid base optional, add suffix SB as designation.