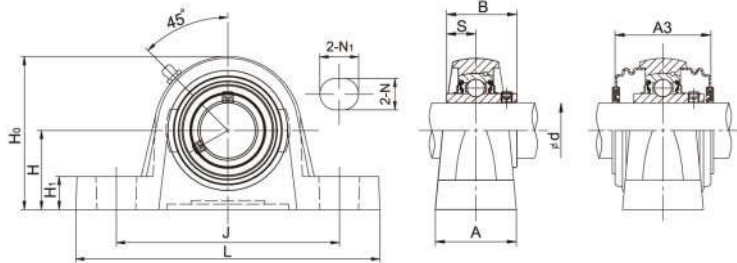


Pillow Blocks LDK®

UCPE Standard duty,Wider inner ring bearing, Solid base housing, Setscrew locking



Unit No.	Shaft Dia		Dimensions (mm)										Bolt Size		Weight (kg)	
	(in)	(mm)	H	L	J	A	N	N ₁	H ₁	H ₀	B	S	A ₃	(mm)		(in)
UCPE201		12														
201-8	1/2	15														
202																
202-9	9/16	17	30.2	124	95	31	11	15	14	57.1	26	10		M8	5/16	0.57
203-10	5/8															
203																
203-11	11/16															
UCPE204		20														
204-12	3/4		33.3	127	95	38	13	16	15	65	31	12.7	46.4	M10	3/8	0.82
UCPE205		25														
205-14	7/8															
205-15	15/16		36.5	140	105	38	13	16	16	70	34.1	14.3	48	M10	3/8	0.94
205-16	1															
UCPE206		30														
206-17	1-1/16															
206-18	1-1/8		42.9	160	121	48	17	21	18	83	38.1	15.9	52	M14	1/2	1.46
206-19	1-3/16															
206-20	1-1/4															
UCPE207		35														
207-20	1-1/4															
207-21	1-5/16		47.6	167	127	48	17	21	19	94	42.9	17.5	59	M14	1/2	1.76
207-22	1-3/8															
207-23	1-7/16															
UCPE208		40														
208-24	1-1/2		49.2	184	137	54	17	25	19	100	49.2	19.0	68.2	M14	1/2	2.13
208-25	1-9/16															
UCPE209		45														
209-26	1-5/8															
209-27	1-11/16		54	190	146	54	17	25	20	108	49.2	19.0	70	M14	1/2	2.43
209-28	1-3/4															
UCPE210		50														
210-30	1-7/8															
210-31	1-15/16		57.2	206	159	60	20	25	22	114	51.6	19.0	76	M16	5/8	3.13
210-32	2															
UCPE211		55														
211-32	2															
211-34	2-1/8		63.5	219	171	60	20	25	22	126	55.6	22.2	76	M16	5/8	3.87
211-35	2-3/16															
UCPE212		60														
212-36	2-1/4															
212-38	2-3/8		69.9	241	184	70	20	25	25	138	65.1	25.4	89	M16	5/8	5.51
212-39	2-7/16															
UCPE213		65														
213-40	2-1/2		76.2	265	203	70	25	29	27	150	65.1	25.4	89	M20	3/4	6.63
UCPE214		70														
214-44	2-3/4		79.4	266	210	72	25	31	27	156	74.6	30.2	98	M20	3/4	7.46
UCPE215		75														
215-47	2-15/16		82.6	275	217	74	25	31	28	163	77.8	33.3	97	M20	3/4	8.21
215-48	3															

Notes:1.Upon request,presed steel covers available at both ends.S=Open cap,SM=Close cap. Ordering example:UCPE205+SM.