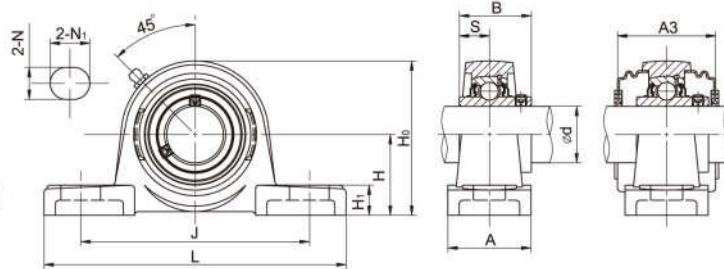


Pillow Blocks LDK®

UCP Standard duty,Wider inner ring bearing, Setscrew locking



Unit No.	Shaft Dia		Dimensions(mm)											Bolt Size (mm)	Weight (kg)	
	d		H	L	J	A	N	N ₁	H ₁	H ₀	B	S	A3			
	(in)	(mm)														
UCWP201		12	30.2	125	95	32	13	18	13	57	27.4	11.5	—	M10	0.72	
202		15														0.66
203		17														0.66
UCP201	1/2	12	30.2	127	95	38	13	19	14	61	31	12.7	—	M10	0.76	
UCP202		15	30.2	127	95	38	13	19	14	61	31	12.7	—	M10	0.74	
202-9	9/16															
202-10	5/8															
UCP203	11/16	17	30.2	127	95	38	13	19	14	61	31	12.7	—	M10	0.72	
UCP204	3/4	20	33.3	127	95	38	13	19	14	64	31	12.7	46.4	M10	0.70	
UCP205		25	36.5	140	105	38	13	19	15	71	34.1	14.3	48	M10	0.76	
205-14	7/8															
205-15	15/16															
205-16	1															
UCP206		30	42.9	160	121	44	17	21	16	82	38.1	15.9	52	M14	1.25	
206-17	1-1/16															
206-18	1-1/8															
206-19	1-3/16															
206-20	1-1/4															
UCP207		35	47.6	167	126	48	17	21	17	92	42.9	17.5	59	M14	1.55	
207-20	1-1/4															
207-21	1-5/16															
207-22	1-3/8															
207-23	1-7/16															
UCP208	1-1/2	40	49.2	180	137	52	17	21	18	99	49.2	19	68.2	M14	1.90	
UCP209	1-5/8	45	54	190	146	54	17	21	20	106	49.2	19	70	M14	2.20	
209-26	1-11/16															
209-27	1-3/4															
UCP210		50	57.2	206	159	60	20	25	21	114	51.6	19	76	M16	2.75	
210-30	1-7/8															
210-31	1-15/16															
210-32	2															
UCP211	2	55	63.5	217	172	60	20	25	23	125	55.6	22.2	76	M16	3.30	
UCP212		60	69.9	238	186	70	20	25	24	137	65.1	25.4	89	M16	4.70	
212-36	2-1/4															
212-38	2-3/8															
UCP213	2-1/2	65	76.2	262	203	70	25	30	26	149	65.1	25.4	89	M20	5.60	
UCP214	2-3/4	70	79.4	266	210	72	25	30	27	155	74.6	30.2	98	M20	6.60	
UCP215	2-15/16	75	82.6	274	217	74	25	30	28	162	77.8	33.3	97	M20	7.30	
215-47	3															
UCP216		80	88.9	292	232	78	25	30	30	174	82.6	33.3	110	M20	9.00	
UCP217	3-1/4	85	95.2	310	247	83	25	28	32	186	85.7	34.1	114.2	M20	10.80	
UCP218	3-1/2	90	101.6	326	262	88	27	30	33	198	96	39.7	124	M22	13.00	
UCP220		100	115	380	305	95	30	36	40	225	108	42	—	M24	16.00	

Notes: 1. Bearing housing solid base optional, add suffix SB as designation.
 2. Upon request, pressed steel covers available at both ends. S=Open cap, SM=Close cap. Ordering example: UCP205+SM.
 3. Grease fittings also available at 90° positions.