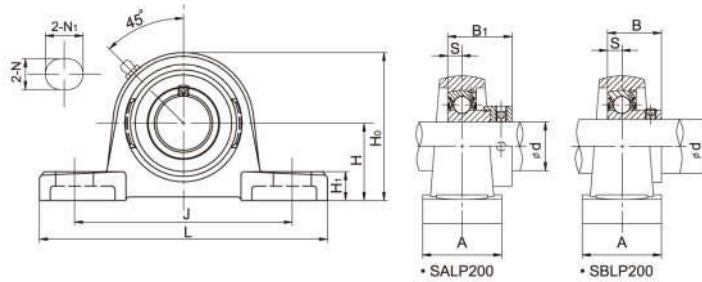


# Pillow Blocks LDK®

## SALP/SBLP Light duty, Eccentric/Setscrew locking



### SALP200 Series

Unit No.	Shaft Dia		Dimensions (mm)										Bolt Size (mm)	Weight (kg)	
	d (in)	d (mm)	H	L	J	A	N	N <sub>1</sub>	H <sub>1</sub>	H <sub>0</sub>	B <sub>1</sub>	S			
SALP201	1/2	12	30.2	114	87	25	11	16	12	57	28.6	6.5	M10	0.4	
201-8		15													
202		17													
202-9		9/16													
202-10		5/8													
203	11/16	20	33.3	125	97	27	11.5	16	14	63.8	30.9	7.5	M10	0.52	
203-11															
SALP204	7/8	25	36.5	130	100	29	11.5	16	15	69.5	30.9	7.5	M10	0.61	
SALP205															15/16
205-14															1
205-15	1-1/16	30	42.9	156	121	33	14	21	16	82	35.7	9	M12	0.73	
206-17															1-1/8
206-18															1-3/16
206-19															1-1/4
206-20															1-1/4
SALP207	1-1/4	35	47.6	165	127	35	14	21	16	93	38.9	9.5	M12	1.0	
207-20															1-5/16
207-21															1-3/8
207-22															1-7/16
207-23															1-7/16

### SBLP200 Series

Unit No.	Shaft Dia		Dimensions (mm)										Bolt Size (mm)	Weight (kg)	
	d (in)	d (mm)	H	L	J	A	N	N <sub>1</sub>	H <sub>1</sub>	H <sub>0</sub>	B	S			
SBLP201	1/2	12	30.2	114	87	25	11	16	12	57	22	6.5	M10	0.4	
201-8		15													
202		17													
202-9		9/16													
202-10		5/8													
203	11/16	20	33.3	125	97	27	11.5	16	14	63.8	25	7.5	M10	0.52	
203-11															
SBLP204	7/8	25	36.5	130	100	29	11.5	16	15	69.5	27	7.5	M10	0.61	
SBLP205															15/16
205-14															1
SBLP206	1-1/16	30	42.9	156	121	33	14	21	16	82	30	9	M12	0.73	
206-17															1-1/8
206-18															1-3/16
206-19															1-1/4
206-20															1-1/4
SBLP207	1-1/4	35	47.6	165	127	35	14	21	16	93	32	9.5	M12	1.0	
207-20															1-5/16
207-21															1-3/8
207-22															1-7/16
207-23															1-7/16

Notes: 1. Grease fittings also available at 90° positions.