

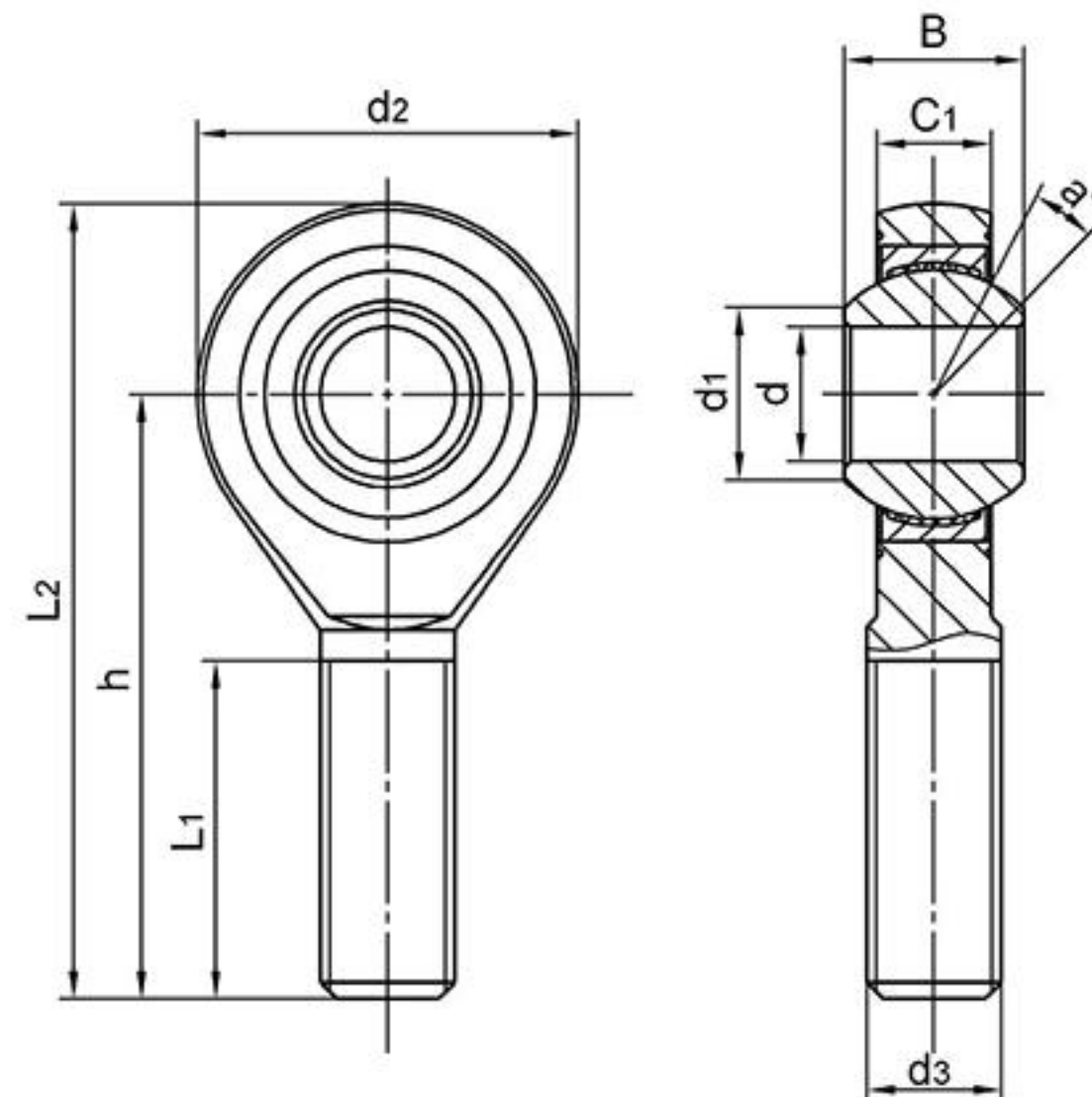
COS..

Ball: Gcr15 Steel, heat treated, HRC58~64;
Precision ground, polished

Body: Carbon steel, Zinc plated,chromate treated

Race: Brass, PTFE composite bonded to I.D of race

Sliding contact surfaces: Steel/PTFE composite



Bearing No.	Dimensions(mm)									Ball dia	a° mis. angle	Load ratings (KN)		weight ≈ Kg
	d _{H7}	B	C ₁	d ₁	d ₂	d _{3-6g}	h	L ₁	L ₂			Dynamic	Static	
COS3	3	6	4.5	5.1	14	M3	26	15	33	7.93	14	1.5	1.8	0.006
COS4	4	7	5.25	6.5	16	M4	30	19	38	9.52	13	2.0	2.9	0.011
COS5	5	8	6	7.7	18	M5	33	19	42	11.11	13	3.25	4.3	0.013
COS6	6	9	6.75	8.9	20	M6	36	21	46	12.7	13	4.25	6	0.020
COS8	8	12	9	10.3	24	M8	42	25	54	15.87	14	7.1	11	0.038
COS10	10	14	10.5	12.9	28	M10	48	28	63	19.05	13	9.8	17.4	0.055
COS12	12	16	12	15.4	32	M12	54	32	71	22.22	13	13.2	23.5	0.085
COS14	14	19	13.5	16.8	36	M14	60	36	79	25.4	16	17	28	0.140
COS16	16	21	15	19.3	42	M16	66	37	87	28.58	15	21.4	32	0.210
COS18	18	23	16.5	21.8	46	M18x1.5	72	41	95	31.75	15	26	42.5	0.280
COS20	20	25	18	24.3	50	M20x1.5	78	45	103	34.92	14	31	47.5	0.380
COS22	22	28	20	25.8	54	M22x1.5	84	48	112	38.1	15	42.2	57	0.480
COS25	25	31	22	29.5	60	M24x2	94	55	124	42.86	15	52.7	68	0.640
COS28	28	35	24	32.29	66	M27x2	103	62	136	47.63	15	58.8	79	0.949
COS30	30	37	25	34.8	70	M30x2	110	66	145	50.8	17	70.7	88	1.100

Can supply rod ends with different pitch or accuracy of thread.

For left-hand thread, suffix"L" is added to bearing numbers. eg.: COS20L M20 x 1.5L-6g: