

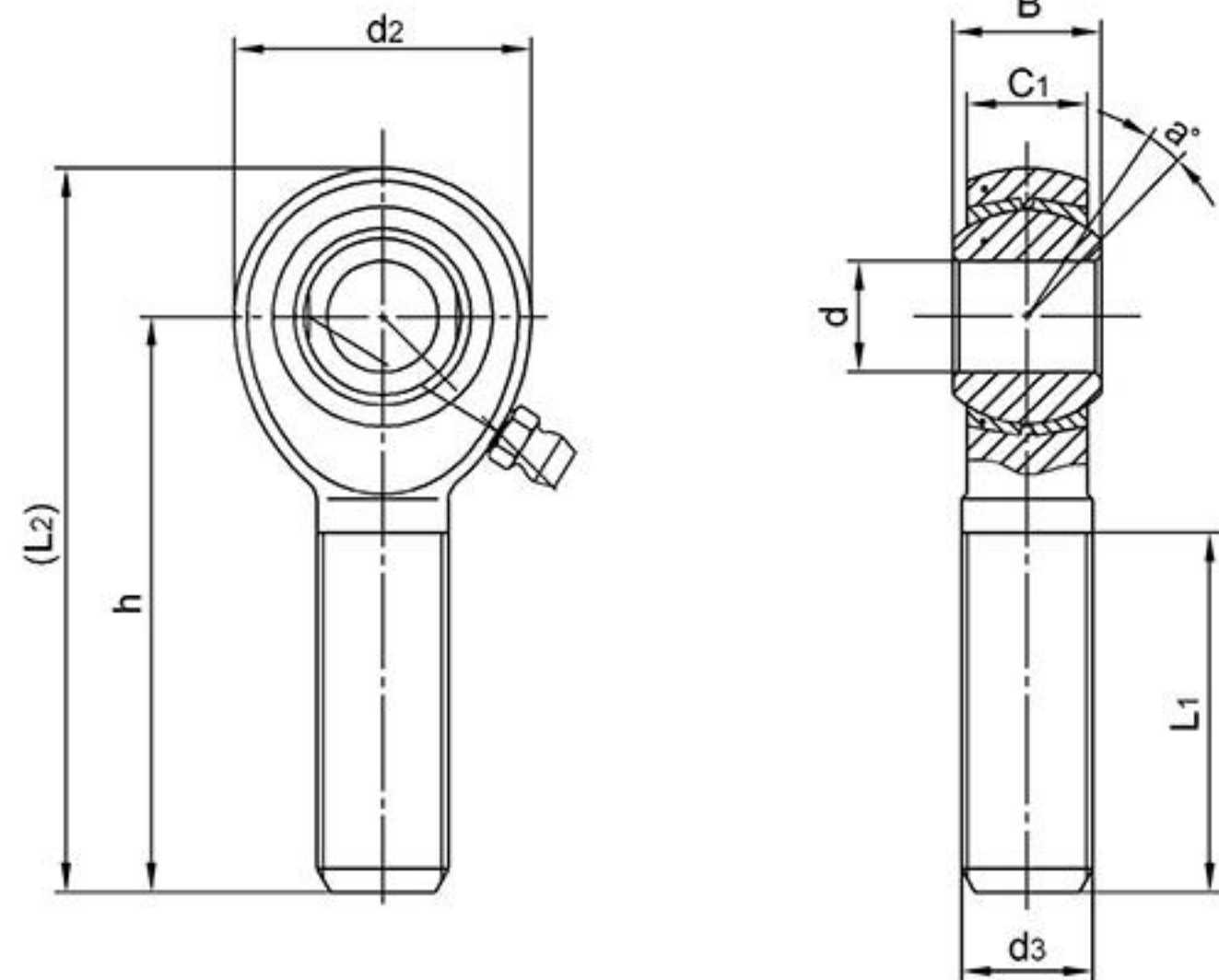
M..

Ball: Gcr15 Steel, heat treated, HRC56min;
precision ground, polished hard
chromium plated

Body: Carbon steel, zinc plated,chromate treated

Race: Brass

Sliding contact surfaces: Steel/Brass



| Bearing No. | Dimensions(mm/inches) | | | | | | | | Ball dia | a° mis. angle | Load ratings (KN) | weight ≈ kg |
|-------------|---------------------------------------|-------|-------|-------|----------------------|--------|-------|-------|----------|---------------|-------------------|-------------|
| | d ^{+0.038} _{-0.012} | B | C1 | d2 | d3 _{UNF-2A} | h | L1 | (L2) | | | | |
| M3 | 4.826 | 7.92 | 6.35 | 15.88 | 10-32 | 31.75 | 19.05 | 39.69 | 11.11 | 10 | 4.4 | 0.013 |
| | 0.1900 | 0.312 | 0.250 | 0.625 | | 1.250 | 0.750 | 1.562 | 0.437 | | | |
| M4 | 6.35 | 9.53 | 7.14 | 19.05 | 1/4-28 | 39.67 | 25.4 | 49.2 | 12.7 | 13 | 8.2 | 0.018 |
| | 0.2500 | 0.375 | 0.281 | 0.750 | | 1.562 | 1.000 | 1.937 | 0.500 | | | |
| M5 | 7.938 | 11.10 | 8.74 | 22.23 | 5/16-24 | 47.63 | 31.75 | 58.75 | 15.88 | 10 | 13.1 | 0.031 |
| | 0.3125 | 0.437 | 0.344 | 0.875 | | 1.875 | 1.250 | 2.312 | 0.625 | | | |
| M6 | 9.525 | 12.7 | 10.31 | 25.4 | 3/8-24 | 49.22 | 31.75 | 61.92 | 18.26 | 9 | 14.6 | 0.049 |
| | 0.3750 | 0.500 | 0.406 | 1.000 | | 1.938 | 1.250 | 2.437 | 0.719 | | | |
| M7 | 11.112 | 14.27 | 11.1 | 28.58 | 7/16-20 | 53.98 | 34.93 | 68.27 | 20.62 | 11 | 19.5 | 0.072 |
| | 0.4375 | 0.562 | 0.437 | 1.125 | | 2.125 | 1.375 | 2.678 | 0.812 | | | |
| M8 | 12.7 | 15.88 | 12.7 | 33.32 | 1/2-20 | 61.92 | 38.1 | 78.58 | 23.8 | 9 | 29.4 | 0.113 |
| | 0.5000 | 0.625 | 0.500 | 1.312 | | 2.438 | 1.500 | 3.093 | 0.937 | | | |
| M10 | 15.875 | 19.05 | 14.27 | 38.1 | 5/8-18 | 66.68 | 41.28 | 85.73 | 28.58 | 11 | 35.5 | 0.172 |
| | 0.6250 | 0.750 | 0.562 | 1.500 | | 2.625 | 1.625 | 3.375 | 1.125 | | | |
| M12 | 19.05 | 22.23 | 17.45 | 44.45 | 3/4-16 | 73.02 | 44.45 | 95.25 | 33.33 | 10 | 50.2 | 0.272 |
| | 0.7500 | 0.875 | 0.687 | 1.750 | | 2.875 | 1.750 | 3.750 | 1.312 | | | |
| M14 | 22.225 | 22.23 | 17.45 | 50.8 | 7/8-14 | 85.73 | 47.63 | 111.1 | 33.33 | 10 | 85 | 0.408 |
| | 0.8750 | 0.875 | 0.687 | 2.000 | | 3.375 | 1.875 | 4.375 | 1.312 | | | |
| M16 | 25.4 | 34.93 | 25.4 | 69.85 | 5/4-12 | 104.78 | 53.98 | 139.7 | 47.63 | 14 | 152.5 | 1.091 |
| | 1.0000 | 1.375 | 1.000 | 2.750 | | 4.125 | 2.125 | 5.500 | 1.875 | | | |

Note: For grease fittings add " Z" to suffix example: M6Z

Can supply rod ends with different pitch or accuracy of thread.

For left-hand thread, suffix"L" is added to bearing numbers. eg.: ML12 3/4-16L