

CM..TY

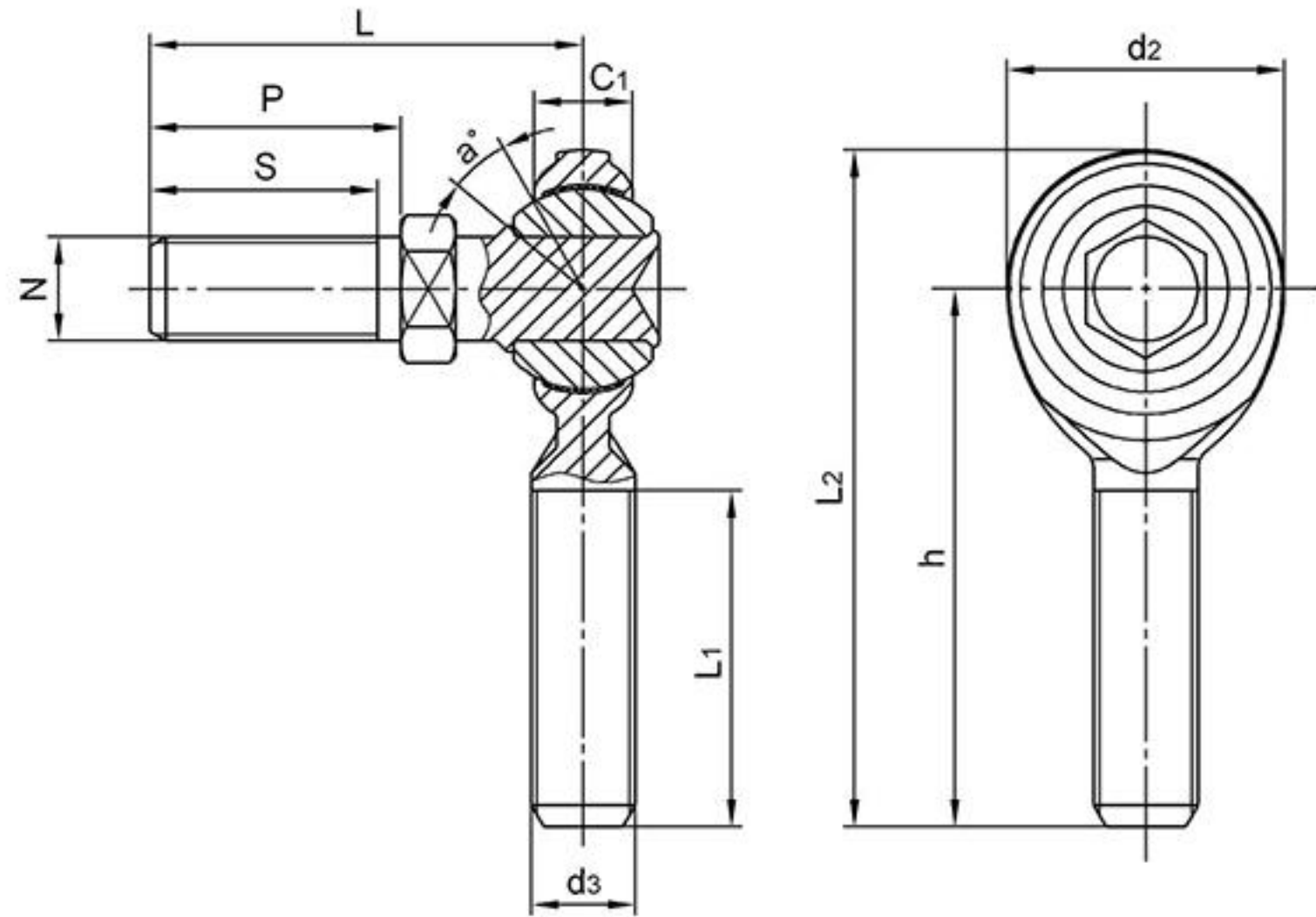
Ball: Gcr15 Steel, heat treated, HRC56min;
precision ground, polished, hard
chromium plated

Body: Carbon steel zinc plated,chromate treated

Liner: PTFE composite or PTFE fabric

Stud: Low carbon steel, zinc plated

Sliding contact surfaces: Steel/PTFE Composite
or Steel/PTFE fabric



Bearing No.	Dimensions(mm/inches)										Ball dia	a° mis. angle	Load ratings (KN)	weight ≈ kg
	d2	C1	d3 UNF-2A	h	L1	(L4)	N UNF-2A	S	P	L				
CM3TY	15.88	5.94	10-32	31.75	19.05	39.69	10-32	11.1	12.7	25.8	11.11	22	4.4	0.018
	0.625	0.234		1.250	0.750	1.562		0.437	0.500	1.016	7/16			
CM4TY	19.05	6.35	1/4-28	39.67	25.4	49.2	1/4-28	12.7	14.27	26.18	12.7	20	8.2	0.022
	0.750	0.250		1.562	1.000	1.937		0.500	0.562	1.031	1/2			
CM5TY	22.23	7.92	5/16-24	47.63	31.75	58.75	5/16-24	15.06	17.45	30.96	15.88	21	10.2	0.045
	0.875	0.312		1.875	1.250	2.312		0.593	0.687	1.219	5/8			
CM6TY	25.4	9.11	3/8-24	49.23	31.75	61.92	3/8-24	20.62	23	39.67	18.26	23	14	0.068
	1.000	0.359		1.938	1.250	2.437		0.812	0.906	1.562	23/32			
CM7TY	28.58	10.31	7/16-20	53.98	34.93	68.27	7/16-20	23.8	26.97	44.45	20.62	22	17.6	0.108
	1.125	0.406		2.125	1.375	2.678		0.937	1.062	1.750	13/16			
CM8TY	33.33	11.5	1/2-20	61.93	38.1	78.58	1/2-20	25.4	28.58	50.8	23.8	24	23.7	0.158
	1.312	0.453		2.438	1.500	3.093		1.000	1.125	2.000	15/16			
CM10TY	38.1	12.3	5/8-18	66.68	41.28	85.73	5/8-18	34.93	38.1	63.5	28.57	26	25.7	0.276
	1.500	0.484		2.625	1.625	3.375		1.375	1.500	2.500	9/8			
CM12TY	44.45	15.06	3/4-16	73.03	44.45	95.25	3/4-16	41.28	46.02	76.2	33.33	23	42.4	0.467
	1.750	0.593		2.875	1.750	3.750		1.625	1.812	3.000	21/16			

Can supply rod ends with different pitch or accuracy of thread.

For left-hand thread, suffix"L" is added to bearing numbers. eg.: CML6TY 3/8-24L