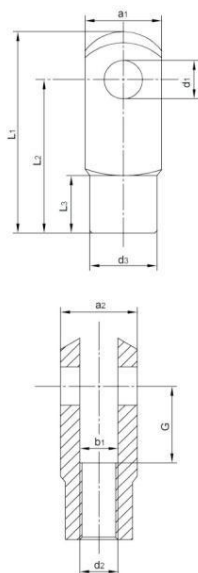


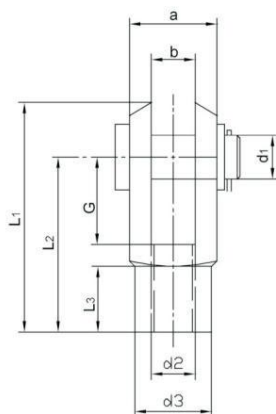
MOUNTING ACCESSORIES FOR PNEUMATIC CYLINDERS

CEF-DIN71752(Rod Clevis)



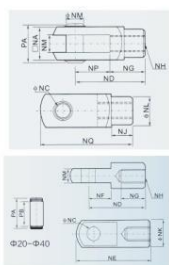
Bearing NO.	Dimensions (mm)										Weight ≈kg
	d ₁ H ₉	G ±0.5	a ₁ h ₁₁	a ₂ +0.30 -0.16	b +0.70 -0.15	d ₂	d ₃	L ₁ ±0.2	L ₂ ±0.4	L ₃ ±0.2	
CEF 4x8	4	8	8	8	4	M4	8	21	16	6	0.006
CEF 4x16	4	16	8	8	4	M4	8	29	24	6	0.008
CEF 5x10	5	10	10	10	5	M5	9	26	20	7.5	0.010
CEF 5x20	5	20	10	10	5	M5	9	36	30	7.5	0.014
CEF 6x12	6	12	12	12	6	M6	10	31	24	9	0.016
CEF 6x24	6	24	12	12	6	M6	10	43	36	9	0.023
CEF 8x16	8	16	16	16	8	M8	14	42	32	12	0.038
CEF 8x32	8	32	16	16	8	M8	14	58	48	12	0.055
CEF 10x20	10	20	20	20	10	M10	18	52	40	15	0.080
CEF 10x40	10	40	20	20	10	M10	18	72	60	15	0.120
CEF 12x24	12	24	24	24	12	M12	20	62	48	18	0.125
CEF 12x48	12	48	24	24	12	M12	20	86	72	18	0.180
CEF 14x28	14	28	28	28	14	M14	24	72	56	22.5	0.190
CEF 14x56	14	56	28	28	14	M14	24	101	85	22.5	0.265
CEF 16x32	16	32	32	32	16	M16	26	83	64	24	0.300
CEF 16x64	16	64	32	32	16	M16	26	115	96	24	0.430

Y-DIN71751(Rod Clevis)



Bearing NO.	Dimensions (mm)									Weight ≈kg
	d ₁	G	a	b	d ₂	d ₃	L ₁	L ₂	L ₃	
Y 4x8	4	8	8	4	M4	8	21	16	6	0.006
Y 4x16	4	16	8	4	M4	8	29	24	6	0.008
Y 5x10	5	10	10	5	M5	9	26	20	7.5	0.010
Y 5x20	5	20	10	5	M5	9	36	30	7.5	0.014
Y 6x12	6	12	12	6	M6	10	31	24	9	0.016
Y 6x24	6	24	12	6	M6	10	43	36	9	0.023
Y 8x16	8	16	16	8	M8	14	42	32	12	0.038
Y 8x32	8	32	16	8	M8	14	58	48	12	0.055
Y 10x20	10	20	20	10	M10	18	52	40	15	0.080
Y 10x40	10	40	20	10	M10	18	72	60	15	0.120
Y 12x24	12	24	24	12	M12	20	62	48	18	0.125
Y 12x48	12	48	24	12	M12	20	86	72	18	0.180
Y 14x28	14	28	28	14	M14	24	72	56	22.5	0.190
Y 14x56	14	56	28	14	M14	24	101	85	22.5	0.265
Y 16x32	16	32	32	16	M16	26	83	64	24	0.300
Y 16x64	16	64	32	16	M16	26	115	96	24	0.430

ISO-I(Eye Joint)



Bore	NA	NC	ND	NE	NF	NG	NH	NJ	NK	NL	NM	NN	NP	NQ	PA	PB
20	16	8	30	40	11	15	M8x1.25	10	16	14	8	8	15	40	21	16.5
25	19	10	40	52	15	20	M10x1.25	12	20	18	10	10	20	52	25	19.5
32	19	10	40	52	15	20	M10x1.25	12	20	18	10	10	20	52	25	19.5
40	25.4	10	45	57	15	25	M12x1.25	15	24	23	14	10	20	57	31	26