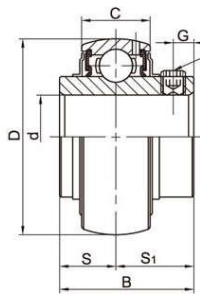
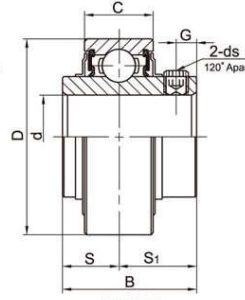


# LDK<sup>®</sup> Bearing Inserts

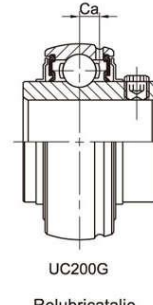
## UC/UC..L3/CUC Standard duty, Wider inner ring, Setscrew locking



UC200(Light Duty)  
Spherical O.D.



CUC200  
Cylindrical O.D.



UC200G  
Relubricatable



SL TYPE SEAL



TJ TYPE SEAL



L3 TYPE SEAL

Bearing No.	Shaft Dia		Dimensions(mm)									Basic dynamic Load ratings (KN)	Basic static Load ratings (KN)	Weight (kg)
	d		D	B	C	S	S <sub>1</sub>	G	ds		Ca			
	(in)	(mm)							(mm)	(in.UNF)				
UCW201 201-8	1/2	12	40	27.4	14	11.5	15.9	4.2	M5x0.8	10-32	4.1	9.55	4.78	0.12
UCW202 202-9 202-10	9/16 5/8	15	40	27.4	14	11.5	15.9	4.2	M5x0.8	10-32	4.1	9.55	4.78	0.11
UCW203 203-11	11/16	17	40	27.4	14	11.5	15.9	4.2	M5x0.8	10-32	4.1	9.55	4.78	0.10
UC201 201-8	1/2	12	47	31	17	12.7	18.3	5	M6x1	1/4-28	4.3	12.82	6.65	0.21
UC202 202-9 202-10	9/16 5/8	15	47	31	17	12.7	18.3	5	M6x1	1/4-28	4.3	12.82	6.65	0.19
UC203 203-11	11/16	17	47	31	17	12.7	18.3	5	M6x1	1/4-28	4.3	12.82	6.65	0.18 0.19
UC204 204-12	3/4	20	47	31	17	12.7	18.3	5	M6x1	1/4-28	4.3	12.82	6.65	0.17 0.18
UC205 205-13 205-14 205-15 205-16	13/16 7/8 15/16 1	25	52	34.1	17	14.3	19.8	5.4	M6x1	1/4-28	4	14.03	8.05	0.19 0.22 0.21 0.20 0.19
UC206 206-17 206-18 206-19 206-20	1-1/16 1-1/8 1-3/16 1-1/4	30	62	38.1	19	15.9	22.2	5.5	M6x1	1/4-28	5.3	19.47	11.43	0.31 0.34 0.33 0.32 0.30
UC207 207-20 207-21 207-22 207-23	1-1/4 1-5/16 1-3/8 1-7/16	35	72	42.9	20	17.5	25.4	6.9	M8x1	5/16-24	5.8	25.69	15.55	0.46 0.52 0.51 0.48 0.46
UC208 208-24 208-25	1-1/2 1-9/16	40	80	49.2	21	19.0	30.2	8	M8x1	5/16-24	6.2	29.51	18.14	0.63 0.68 0.64
UC209 209-26 209-27 209-28	1-5/8 1-11/16 1-3/4	45	85	49.2	22	19.0	30.2	8	M8x1	5/16-24	6.5	31.85	20.8	0.68 0.78 0.74 0.70
UC210 210-30 210-31 210-32	1-7/8 1-15/16 2	50	90	51.6	24	19.0	32.6	10	M10x1.25	3/8-24	7	34.99	23.7	0.78 0.85 0.80 0.78
UC211 211-32 211-33 211-34 211-35	2 2-1/16 2-1/8 2-3/16	55	100	55.6	25	22.2	33.4	10	M10x1.25	3/8-24	7.4	43.34	29.39	1.07 1.22 1.16 1.10 1.05
UC212 212-36 212-37 212-38 212-39	2-1/4 2-5/16 2-3/8 2-7/16	60	110	65.1	27	25.4	39.7	10	M10x1.25	3/8-24	7.6	47.68	33.43	1.51 1.65 1.59 1.52 1.42
UC213 213-39 213-40	2-7/16 2-1/2	65	120	65.1	28	25.4	39.7	10	M10x1.25	3/8-24	8.5	57.2	40.01	1.86 1.96 1.94
UC214 214-43 214-44	2-11/16 2-3/4	70	125	74.6	29	30.2	44.4	12	M12x1.25	7/16-20	8.9	62.19	43.9	2.18 2.28 2.06
UC215 215-47 215-48	2-15/16 3	75	130	77.8	30	33.3	44.5	12	M12x1.25	7/16-20	9.2	62.08	44.82	2.21 2.30 2.13
UC216	80	140	82.6	33	33.3	49.3	12	M12x1.25		9.5	72.62	53.34	2.79	
UC217 217-52	3-1/4	85	150	85.7	35	34.1	51.6	12	M12x1.25	7/16-20	11.1	83.15	64.54	3.38 3.59
UC218 218-56	3-1/2	90	160	96	37	39.7	56.3	12	M12x1.25	7/16-20	11.8	95.84	72.64	4.46 4.56