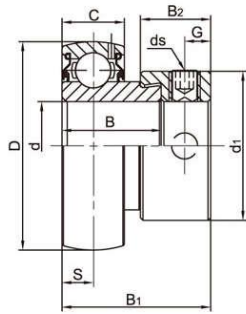
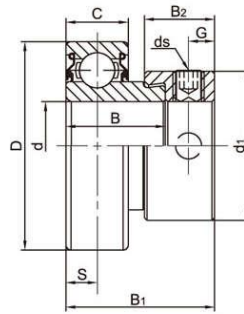


LDK[®] Bearing Inserts

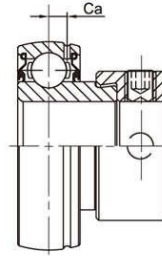
SA/CSA Standard duty, Narrow inner ring, Eccentric locking



SA200(Light Duty)
Spherical O.D.



CSA200
Cylindrical O.D.



SA200G
Relubricatable type



Bearing No.	Shaft Dia		Dimensions(mm)										Basic load ratings (KN)		Weight (kg)	
	d		D	B	C	S	B ₁	B ₂	d ₁	G	ds		Ca	Dynamic Cr		Static Cor
	(in)	(mm)									(mm)	(in.UNF)				
SA 201 201-8	1/2	12	40	19.1	12	6	28.6	13.5	28.6	5	M6x1	1/4-28	3.5	9.55	4.78	0.2
SA 202 202-9 202-10	9/16 5/8	15	40	19.1	12	6	28.6	13.5	28.6	5	M6x1	1/4-28	3.5	9.55	4.78	0.2
SA 203 203-11	11/16	17	40	19.1	12	6	28.6	13.5	28.6	5	M6x1	1/4-28	3.5	9.55	4.78	0.2
SA 204 204-12	3/4	20	47	21.5	14	7	31	13.5	33.3	5	M6x1	1/4-28	4	12.82	6.65	0.21
SA 205 205-13 205-14 205-15 205-16	13/16 7/8 15/16 1	25	52	22	15	7.5	31.5	13.5	38.1	5	M6x1	1/4-28	4.3	14.03	8.05	0.25
SA 206 206-17 206-18 206-19 206-20	1-1/16 1-1/8 1-3/16 1-1/4	30	62	23.8	16	8	35.7	15.9	44.5	6	M6x1	1/4-28	4.9	19.47	11.43	0.39
SA 207 207-20 207-21 207-22 207-23	1-1/4 1-5/16 1-3/8 1-7/16	35	72	25.4	17	8.5	38.9	17.5	55.6	6.5	M8x1	5/16-24	5.5	25.69	15.55	0.6
SA 208 208-24 208-25	1-1/2 1-9/16	40	80	30.2	18	9	43.7	18.3	60.3	6.5	M8x1	5/16-24	6	29.51	18.14	0.77
SA 209 209-26 209-27 209-28	1-5/8 1-11/16 1-3/4	45	85	30.2	19	9.5	43.7	18.3	63.5	6.5	M8x1	5/16-24	6.1	31.85	20.80	0.84
SA 210 210-30 210-31 210-32	1-7/8 1-15/16 2	50	90	30.2	20	10	43.7	18.3	69.9	6.5	M8x1	5/16-24	6.6	34.99	23.70	1.02
SA 211 211-32 211-33 211-34 211-35	2 2-1/16 2-1/8 2-3/16	55	100	32.5	21	10.5	48.4	20.7	76.2	8	M10x1.25	3/8-24	7.2	43.34	29.39	1.37
SA 212 212-36 212-37 212-38 212-39	2-1/4 2-5/16 2-3/8 2-7/16	60	110	37.2	22	11	53.1	22.3	84.2	8	M10x1.25	3/8-24	7.5	47.68	33.43	1.85

1) Suffix G = Lubrication groove and holes on outer rings.

2) Suffix N = Non-lubrication type, without lubrication groove & holes, without anti-rotation pin and holes.