

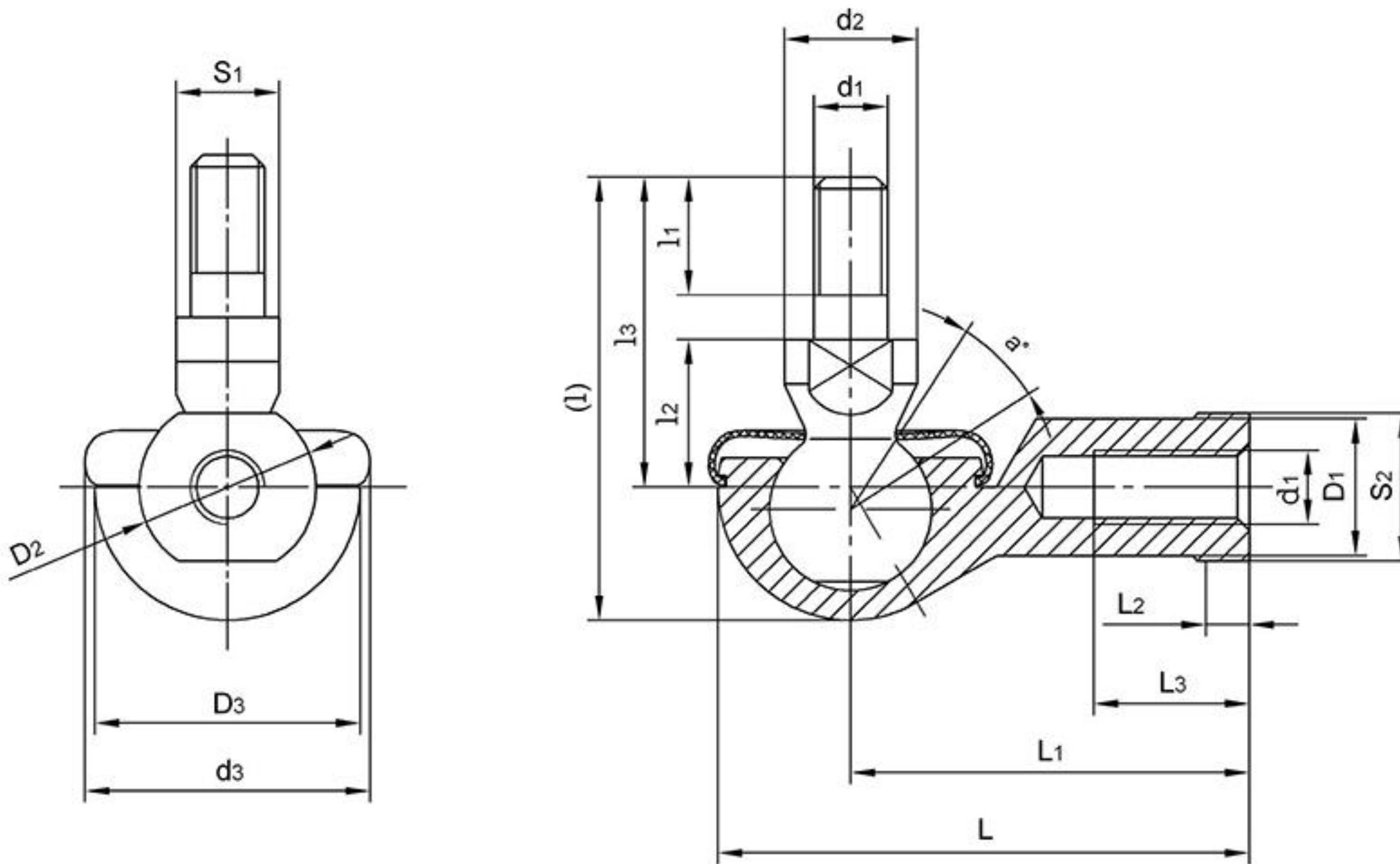
SQ..RS

Ball: Gcr15 Steel

Body: Zinc alloy

Stud: Carbon steel, black oxidized

Sliding contact surfaces: Steel/Zinc base alloy



Bearing No.	Dimensions(mm)																a° mis. angle	Load ratings KN	weight ≈ kg
	d2	d3	d3-6g	l	l1	l2	l3	S1	L	L1	L2	L3	D1	D2	D3	S2			
SQ5-RS	9	19	M5	29	8	10	21	7	35	27	4	14	9	11	16	9	25	2.2	0.026
SQ6-RS	10	20	M6	35.5	11	11	26	8	40	30	5	14	10	13	19	11	25	3.5	0.039
SQ8-RS	12	24	M8	42.5	12	14	31	10	48	36	5	17	12.5	16	23	14	25	6.6	0.068
SQ10-RS	14	30	M10x1.25	50.5	15	17	37	11	57	43	6.5	21	15	19	27	17	25	10	0.112
SQ12-RS	17	32	M12x1.25	57.5	17	19	42	15	66	50	6.5	25	17.5	22	31	19	25	16	0.164
SQ14-RS	19	38	M14x1.5	73.5	22	21.5	56	17	75	57	8	26	20	25	35	22	25	19	0.254
SQ16-RS	22	44	M16x1.5	79.5	23	23.5	60	19	84	64	8	32	22	27	39	22	20	26	0.336
SQ18-RS	23	45	M18x1.5	90	25	26.5	68	20	93	71	10	34	25	31	44	27	20	33	0.464
SQ20-RS	27	50	M20x1.5	90	25	27	68	24	99	77	10	35	27.5	34	44	30	20	45	0.538
SQ22-RS	27	52	M22x1.5	95	26	28	70	24	109	84	12	41	30	37	50	32	16	48	0.713

The shank of ball joint housing may be left-hand thread, for left-hand thread, suffix "L" is added to bearing number and thread sign, e.g. SQL5-RS M5L-6H