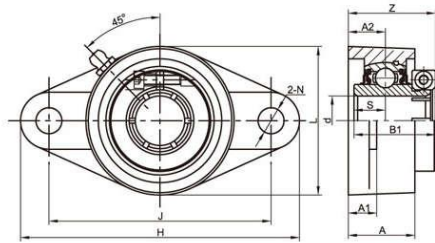
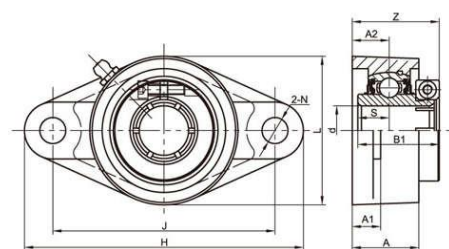


All Stainless Steel Bearing Units **LDK**[®]

SSUEFL..EHB/ESB All stainless steel 2-bolt flange,Hollow/Solid base housing,Concentric locking



SSUEFL200ESB(Solid Base)



SSUEFL200EHB(Hollow Base)

| Unit No. | | Shaft Dia | | Dimensions(mm) | | | | | | | | | | Bolt Size (mm) | Weight (kg) |
|---------------------|--------------------|-----------|------|----------------|-----|----------------|----------------|----|------|-----|------|----------------|------|----------------|-------------|
| Hollow Base Housing | Solid Base Housing | d | | H | J | A ₂ | A ₁ | A | N | L | Z | B ₁ | S | | |
| | | (in) | (mm) | | | | | | | | | | | | |
| SSUEFL204EHB | SSUEFL204ESB | | 20 | 113 | 90 | 15 | 11.5 | 27 | 10.5 | 60 | 35.3 | 33 | 12.7 | M8 | 0.52 |
| 204-12EHB | 204-12ESB | 3/4 | | | | | | | | | | | | | |
| SSUEFL205EHB | SSUEFL205ESB | | 25 | | | | | | | | | | | | |
| 205-14EHB | 205-14ESB | 7/8 | | 130 | 99 | 16 | 13 | 28 | 12.5 | 68 | 37.1 | 35.4 | 14.3 | M10 | 0.72 |
| 205-15EHB | 205-15ESB | 15/16 | | | | | | | | | | | | | |
| 205-16EHB | 205-16ESB | 1 | | | | | | | | | | | | | |
| SSUEFL206EHB | SSUEFL206ESB | | 30 | | | | | | | | | | | | |
| 206-17EHB | 206-17ESB | 1-1/16 | | | | | | | | | | | | | |
| 206-18EHB | 206-18ESB | 1-1/8 | | 148 | 117 | 18 | 13 | 31 | 12.5 | 79 | 41.9 | 39.8 | 15.9 | M10 | 0.99 |
| 206-19EHB | 206-19ESB | 1-3/16 | | | | | | | | | | | | | |
| 206-20EHB | 206-20ESB | 1-1/4 | | | | | | | | | | | | | |
| SSUEFL207EHB | SSUEFL207ESB | | 35 | | | | | | | | | | | | |
| 207-20EHB | 207-20ESB | 1-1/4 | | | | | | | | | | | | | |
| 207-21EHB | 207-21ESB | 1-5/16 | | 161 | 130 | 19 | 14.3 | 34 | 14 | 90 | 43.4 | 43.9 | 17.5 | M12 | 1.39 |
| 207-22EHB | 207-22ESB | 1-3/8 | | | | | | | | | | | | | |
| 207-23EHB | 207-23ESB | 1-7/16 | | | | | | | | | | | | | |
| SSUEFL208EHB | SSUEFL208ESB | | 40 | | | | | | | | | | | | |
| 208-24EHB | 208-24ESB | 1-1/2 | | 171 | 144 | 21 | 14.3 | 36 | 14 | 100 | 52.2 | 50.2 | 19 | M12 | 1.68 |
| 208-25EHB | 208-25ESB | 1-9/16 | | | | | | | | | | | | | |
| SSUEFL209EHB | SSUEFL209ESB | | 45 | | | | | | | | | | | | |
| 209-26EHB | 209-26ESB | 1-5/8 | | | | | | | | | | | | | |
| 209-27EHB | 209-27ESB | 1-11/16 | | 179 | 148 | 22 | 15 | 38 | 16 | 108 | 53.2 | 50.2 | 19 | M14 | 2.43 |
| 209-28EHB | 209-28ESB | 1-3/4 | | | | | | | | | | | | | |
| SSUEFL210EHB | SSUEFL210ESB | | 50 | | | | | | | | | | | | |
| 210-30EHB | 210-30ESB | 1-7/8 | | | | | | | | | | | | | |
| 210-31EHB | 210-31ESB | 1-15/16 | | 195 | 157 | 22 | 15 | 40 | 16 | 115 | 55.6 | 52.6 | 19 | M14 | 2.56 |
| 210-32EHB | 210-32ESB | 2 | | | | | | | | | | | | | |
| SSUEFL211EHB | SSUEFL211ESB | | 55 | | | | | | | | | | | | |
| 211-32EHB | 211-32ESB | 2 | | | | | | | | | | | | | |
| 211-34EHB | 211-34ESB | 2-1/8 | | 224 | 184 | 25 | 18 | 43 | 19 | 130 | 59.4 | 56.6 | 22.2 | M16 | 3.69 |
| 211-35EHB | 211-35ESB | 2-3/16 | | | | | | | | | | | | | |
| SSUEFL212EHB | SSUEFL212ESB | | 60 | | | | | | | | | | | | |
| 212-36EHB | 212-36ESB | 2-1/4 | | | | | | | | | | | | | |
| 212-38EHB | 212-38ESB | 2-3/8 | | 250 | 202 | 29 | 18 | 48 | 23 | 140 | 70.2 | 66.6 | 25.4 | M16 | 4.27 |
| 212-39EHB | 212-39ESB | 2-7/16 | | | | | | | | | | | | | |

Notes: 1.Upon request,available with plastic close cap(CC) or open cap(OC) at one end. Ordering example SSUEFL204-12ESB CC.
2.Lubricated with food grade grease.