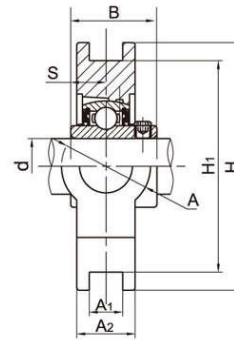
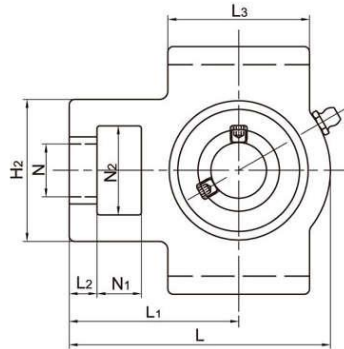


LDK[®] All Stainless Steel Bearing Units

SSUCT All stainless steel take up units, Setscrew locking



Unit No.	Shaft Dia		Dimensions(mm)														Weight (kg)	
	d		N1	L2	H2	N2	N	L3	A1	H1	H	L	A	A2	L1	B		S
	(in)	(mm)																
SSUCT204		20	16	10	51	32	19	51	12	76	89	94	32	21	61	31	12.7	0.79
SSUCT204-12	3/4																	
SSUCT205		25																0.84
SSUCT205-14	7/8																	
SSUCT205-15	15/16		16	10	51	32	19	51	12	76	89	97	32	24	62	34.1	14.3	
SSUCT205-16	1																	
SSUCT206		30																1.32
SSUCT206-17	1-1/16																	
SSUCT206-18	1-1/8		16	10	56	37	22	57	12	89	102	113	37	28	70	38.1	15.9	
SSUCT206-19	1-3/16																	
SSUCT206-20	1-1/4																	
SSUCT207		35																1.72
SSUCT207-20	1-1/4																	
SSUCT207-21	1-5/16		16	13	64	37	22	64	12	89	102	129	37	30	78	42.9	17.5	
SSUCT207-22	1-3/8																	
SSUCT207-23	1-7/16																	
SSUCT208		40																2.52
SSUCT208-24	1-1/2		19	16	83	49	29	83	16	102	114	144	49	33	88	49.2	19	
SSUCT208-25	1-9/16																	
SSUCT209		45																2.52
SSUCT209-26	1-5/8		19	16	83	49	29	83	16	102	117	144	49	35	87	49.2	19	
SSUCT209-27	1-11/16																	
SSUCT209-28	1-3/4																	
SSUCT210		50																2.69
SSUCT210-30	1-7/8		19	16	83	49	29	86	16	102	117	149	49	37	90	51.6	19	
SSUCT210-31	1-15/16																	
SSUCT210-32	2																	
SSUCT211		55																4.04
SSUCT211-32	2		25	19	102	64	35	95	22	130	146	171	64	38	106	55.6	22.2	
SSUCT211-34	2-1/8																	
SSUCT211-35	2-3/16																	
SSUCT212		60																5.00
SSUCT212-36	2-1/4		32	19	102	64	35	102	22	130	146	194	64	42	119	65.1	25.4	
SSUCT212-38	2-3/8																	
SSUCT212-39	2-7/16																	

Notes: 1. Upon request, available with plastic close cap (CC) or open cap (OC) at one end. Ordering example SSUCT204-12 CC.
2. Lubricated with food grade grease.